

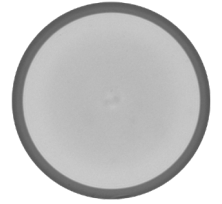
SPECIALTY OPTICAL FIBER

IXF-2CF-MMSI-L-135-155-022

Multimode Fiber

The IXF-MMSI family includes step-index multimode fibers designed for high power delivery in standard and harsh environments with extreme temperatures and/or low to moderate radiation levels. Exail offers a wide range of polymer and metallic coatings well-suited for high-temperature applications.

The IXF-2CF-MMSI-L-135-155-022 fiber has a $\text{Ø}135 \mu\text{m}$ core and a low-index fluoroacrylate coating for excellent signal confinement and high power handling. Other coatings and geometries are available upon request.



Benefits & Features

- $\text{Ø}135 \mu\text{m}$ pure silica core, F-doped cladding
- 0.22 numerical aperture
- Low-index fluoroacrylate coating
- Low-OH core, optimized for 800-1600 nm operation

Applications

- Diode pigtailed
- High-power delivery
- Pump combiner manufacturing

Related Products

- IXF-MMSI-L-105-125-022 $\text{Ø}105 \mu\text{m}$ core
- IXF-MMSI-L-105-125-022-HT $\text{Ø}105 \mu\text{m}$ core, HT acrylate
- IXF-MMSI-L-105-125-022-PI $\text{Ø}105 \mu\text{m}$ core, Polyimide

Parameters

Core diameter (μm)	135.0 ± 1.5
Cladding diameter (μm)	155.0 ± 1.0
Numerical aperture	0.22 ± 0.02
Cladding numerical aperture	≥ 0.46
Core/Clad concentricity (μm)	≤ 1
Coating diameter (μm)	320 ± 15
Proof test level (kpsi)	100

Design parameters

Core material	Pure silica core
OH content	Low-OH
Coating material	Low-index, dual acrylate
Operating temperature range ($^{\circ}\text{C}$)	-60 to +85

Exail reserves the right to change, at any time and without notice, the specifications, design, function or form of its products described herein.

contact.photonics@exail.com | www.exail.com
Europe +33 1 30 08 94 50 | Americas +1 508 745 3487 | APAC +60 11 1623 1698

exail