

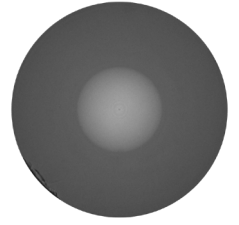
## SPECIALTY OPTICAL FIBER

# IXF-MMGI-50-125-020-PI

## Multimode Fiber

The IXF-MMGI family includes graded-index multimode fibers designed for use in harsh environments with extreme temperatures and/or low to moderate radiation levels. Exail offers a wide range of polymer and metallic coatings well-suited for high-temperature applications.

Polyimide coated fibers offer a wide operating temperature range, from cryogenic temperatures up to +300 °C. The IXF-MMGI-50-125-020-PI fiber is radiation tolerant and can be used under low to moderate radiation levels.



### Benefits & Features

- Graded-index 50-125 multimode fiber
- 0.20 numerical aperture
- Polyimide coating
- Operating temperature up to +300 °C
- Low modal dispersion
- Radiation tolerant for low to moderate radiation levels

### Applications

- Distributed Temperature Sensing (DTS)
- Sensing
- Transport fiber
- 850 nm or 1300 nm with LED / laser light

### Related Products

- IXF-MMGI-50-125-020 Acrylate coating
- IXF-MMGI-50-125-020-AL Aluminum coating
- IXF-MMGI-62-125-027 Øcore 62.5 µm, acrylate coating
- IXF-MMGI-62-125-027-HT Øcore 62.5 µm, HT acrylate coating

### Parameters

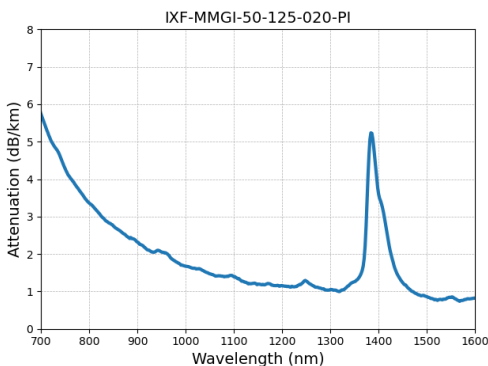
Attenuation @850 nm (dB/km) *	≤ 3.5
Attenuation @1300 nm (dB/km) *	≤ 1.5
Numerical aperture	0.20 ± 0.02
Core/Clad concentricity (µm)	≤ 1
Cladding diameter (µm)	125 ± 2
Core diameter (µm)	50 ± 2
Coating diameter (µm)	155 ± 5
Proof test level (kpsi)	100

### Design parameters

Coating material	Polyimide
Operating temperature range (°C)	-60 to +300

\* For unspooled fiber. Fiber attenuation may be sensitive to conditioning.

Typical RIA @1310 nm for 200 Gy (X-ray, 4.6 mGy/s, RT) : 5 dB/km



Typical attenuation spectrum of the IXF-MMGI-50-125-020-PI fiber.

Exail reserves the right to change, at any time and without notice, the specifications, design, function or form of its products described herein.

contact.photonics@exail.com | www.exail.com  
Europe +33 1 30 08 94 50 | Americas +1 508 745 3487 | APAC +60 11 1623 1698

**exail**